

GENERAL Information

Specifications

Polycarbonate Multi-wall

Multiwall polycarbonate panel is a very strong, light in weight material. Its durability and shatter-resistant properties make it excellent as a screening material.

Available in clear and translucent panels.

Wood

The external wooden parts incorporated in EKITTA products are the highest grade of maple or cherry. These woods, like other natural materials, are subject to variation in grain and coloration. No guarantee will be made of an exact match to EKITTA finish samples.

Custom wood finish samples must accompany the purchase order. Orders specifying custom wood finishes will be scheduled for production upon receipt of an approved customer's custom wood sample match. An upcharge of \$150 NET per order will apply for each custom wood finish sample.

Plastic Laminate

Plastic laminate pricing is based on Wilsonart -38 Fine Velvet and -60 Matte finishes. Wilsonart laminates are GREENGUARD INDOOR AIR QUALITY CERTIFIED

3R and 7R panels may also be specified in any commercially available laminate. Pricing will be determined by the price of the specified laminate, lead time will be based upon the availability of the laminate material. Contact info@ekitta.com for quote.

Painted Metal Finishes

Painted finishes are polyurethane enamel coating with superior durability and excellent impact resistance. Paint finish samples listed are considered standard finishes. All other paint finishes require a price quote from EKITTA.

Aluminum

The metal aluminum is a non-ferrous alloy that is light weight and resistant to corrosion. It can be finished to a natural silvery color or receive an anodized color. Anodizing is an oxidation process that is a permanent and integral part of the aluminum. Contact EKITTA for a price quote.

Stainless Steel

The metal stainless steel is an iron-base alloy containing chromium, which contributes to this material's resistance to corrosion. Depending on the addition of minerals to the alloy, stainless steel's tensile strength, toughness, and corrosion resistance can be enhanced. Stainless steel's finish is a natural silvery color that is very durable and easily maintained.

GENERAL Information

Door Hardware Specifications

Specifying

When ordering, please specify the following:

1. Quantity. All prices are for single units, not pairs
2. Product number
3. All metals and finishes for grip, standoffs and end caps, if applicable
4. Center-to-center dimension
5. Door type and thickness
6. Single or back-to-back mounting

Metal Finish

Stainless Steel Satin

Leather Grip Options

Garrett Leather Chatham
Black #650

Garrett Woven Tubular Leather Square or Herringbone Pattern
Natural
Brandy
Saddle
Black

Leather grip options are not recommended for high traffic areas or exterior use.
For COL or other options, contact EKITTA.

Care and Maintenance

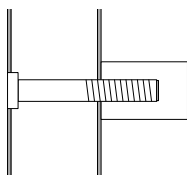
Stainless Steel

Stainless steel is an iron-base alloy containing chromium, which contributes to its resistance to corrosion; however, environmental conditions such as salt air will cause corrosion, but with proper care, stainless steel can maintain its finish for years. Wash stainless steel with soapy water, or a mild detergent or a standard stainless steel cleaner, thoroughly rinse with clean water and polish with a soft dry cloth.

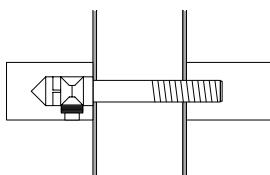
Leather

Leather is a natural material; due to its characteristics, scratches and marks may appear on the surface over time. This appearance is the "character" of natural leather. To maintain the leather, gently dust surface area regularly with a soft, dry cloth. To clean, dampen a clean cloth with lukewarm water. Cleanse the entire area where stain occurred, working from the perimeter of the stain to the center. DO NOT use saddle soap, oil, abrasive, furniture polish, varnish or ammonia.

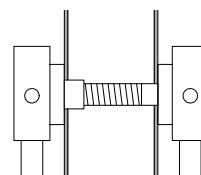
Mounting Options



Single mount on wood or metal door for Loop, Point and Post hardware collections
1/2" diameter hole at center
Finish end cap option, ADD \$60 net each



Back to back mount on glass, wood or metal door for Loop, Point and Post hardware collections
1/2" diameter hole at center



Back to back mount on glass, wood or metal door for Strap hardware collection
1/2" diameter hole at center