

September 2006

HARDWARE

ACCESSORIES

TABLE of Contents



TERMS & Conditions	Pricing Terms Ordering	3
	Cancellations Returns	3
	Claims Warranty	3
GENERAL Information	Shipping & Packaging	4
	Care & Maintenance	4
	Specifications	5
	Hardware Options and Maintenance	6
	Environmental Awareness	7
HARDWARE & Accessories	Loop	8
	Point	8
	Post	9
	Strap	9
	Sash	10

TERMS and Conditions

Mailing Address	EKITTA P.O. Box 140172 Austin, Texas 78714 Phone: 512.928.4700 Fax: 512.928.8004	Ship To Address	EKITTA 8700 Merion Circle Austin, Texas 78754 Phone: 512.928.4700 Fax: 512.928.8004
Pricing / Custom Quotes	Prices shown are suggested list prices, F.O.B. factory, Austin, Texas. Pricing does not include delivery, freight, crating or uncrating, installation, storage, insurance, federal, state, or local taxes. Packing charges shown are net. Pricing on "Custom" quotes is valid for 60 days. Prices, specifications and materials are subject to change without notice.		
Terms	Orders will be scheduled for production after a 50% deposit is received, with the balance and shipping charges to be paid before shipment.		
Ordering	<p>To expedite order entry and to assure proper service, mail orders to the above address or fax to 512-928-8004. If the purchase order is faxed and a copy is mailed, please note on the mailed copy that it is a duplicate.</p> <p>All orders must be accompanied by a written purchase order and a 50% deposit. Orders will be acknowledged promptly upon receipt. The issuance of an Invoice / Acknowledgment indicates acceptance of any order and is final and binding. To expedite processing, we suggest that a copy of the check be faxed to EKITTA before mailing.</p>		
Change Orders / Cancellations	Acknowledged orders may be changed only by mutual agreement. Revisions and cancellations are subject to price and schedule adjustments and / or cancellation charges, as appropriate.		
Returns	Items may be returned only with EKITTA's written consent and shipping instructions, and with all related transportation costs to be paid by the purchaser. All returned merchandise is subject to a minimum 35% restocking charge. Customer-damaged items and custom-made items cannot be returned under any circumstance.		
Damaged Merchandise / Claims	<p>For your protection, we suggest that all merchandise be inspected upon arrival. If merchandise is received visibly damaged, accept delivery, note damage on freight bill and file claim immediately with the carrier. All claims as to breakage, damage or shortage must be made and adjusted with the carrier by the purchaser. Regardless of final adjustment or adjudication of claim, EKITTA's invoices are due in full subject to usual terms.</p> <p>Concealed damage (that doesn't become apparent until merchandise is unpacked) should be reported to the carrier in writing within 15 days, requesting an inspection. Be sure to keep a copy of such report and request for inspection to support your claim should the carrier fail to comply with your request.</p> <p>In the event of shortage, do not accept the shipment until such shortage is noted on the bill of lading, and notify EKITTA immediately.</p>		
Product Design	EKITTA reserves the right to make changes in design and construction or to discontinue products without notice. All dimensions are approximate.		
Warranty	EKITTA warrants its products to be free of defects in materials and workmanship for one year from date of delivery. This warranty assumes normal and correct product usage. EKITTA accepts no liability resulting from abnormal use, misuse, abuse, alteration by customer, or damage in transit. It is understood that these limitations are part of the terms and conditions of purchase of EKITTA products and by placing an order, the purchaser accepts these limitations. Option of repair or replacement under this warranty is at the discretion of EKITTA.		

GENERAL Information

Shipping and Packaging

All merchandise is packed to carrier standards and inspected before shipment. All shipping dates are approximate; a specific arrival date cannot be guaranteed. All orders are shipped upon completion and payment of any balance due.

EKITTA will determine carrier if none is specified; specified carriers require approval of EKITTA.

EKITTA will not drop-ship to end consumer without prior approval.

Freight company accessorial charges, such as "call before delivery," residential delivery or inside delivery, if required or necessary, will be added to the dock-to-dock prepaid freight charge.

Title of the product changes when the merchandise leaves EKITTA's dock. Any subsequent damage claim is the responsibility of the purchaser.

Care and Maintenance

Painted Steel

The polyurethane painted finish does not require special maintenance. Regular dusting with a soft cloth or duster is usually sufficient. If a cleaning agent seems to be necessary, we suggest your using a mild detergent spray.

Aluminum

Light scratches can be cleaned using a small amount of cleanser (or specific commercial cleaner for aluminum) and a clean cloth with plenty of water.

Stainless Steel

Wash stainless steel with soapy water, or a mild detergent or a standard stainless steel cleaner, thoroughly rinse with clean water and polish with a soft dry cloth.

Glass

The clear glass can be cleaned with the application of any glass or mirror spray cleaner and a soft cloth.

The etched side of the glass should be mounted on the bottom. Care in handling will reduce the frequency of marking by body oils. Fingerprints on the etching may be removed with Windex or similar product or (strange as it may seem) by rubbing with styrofoam.

GENERAL Information

Specifications

Glass

Glass

The standard glass which tops all tables quotes in our pricelist. All glass is made according to government specifications (DD-G-451-C) and may contain defects. These defects are inherent in the manufacturing and are within specification. All glass has a natural green tint, and the tint is more noticeable when the glass is thicker or larger.

Starphire Glass

A clearer (less green) glass that is available. Requires a price quote from EKITTA.

Etched Glass

The standard glass that is sandblasted on one side. The sandblasted side is mounted on the bottom, thus creating an opaque or frosted appearance. Etched glass is quoted in the pricelist.

Tempered Glass

Clear glass that has been manufactured to withstand greater stresses than annealed glass. Although sometimes referred to as "safety glass," it is breakable, but it will break into small blunt fragments. Requires a price quote from EKITTA.

Wood

The external wooden parts incorporated in EKITTA products are the highest grade of maple or cherry. These woods, like other natural materials, are subject to variation in grain and coloration. No guarantee will be made of an exact match to EKITTA finish samples.

Custom wood finish samples must accompany the purchase order. Orders specifying custom wood finishes will be scheduled for production upon receipt of an approved customer's custom wood sample match. An upcharge of \$125 NET per order will apply for each custom wood finish.

Painted Metal Finishes

Painted finishes are polyurethane enamel coating with superior durability and excellent impact resistance. Paint finish samples listed are considered standard finishes. All other paint finishes require a price quote from EKITTA.

Aluminum

The metal aluminum is a non-ferrous alloy that is light weight and resistant to corrosion. It can be finished to a natural silvery color or receive an anodized color. Anodizing is an oxidation process that is a permanent and integral part of the aluminum. Contact EKITTA for a price quote.

Stainless Steel

The metal stainless steel is an iron-base alloy containing chromium, which contributes to this material's resistance to corrosion. Depending on the addition of minerals to the alloy, stainless steel's tensile strength, toughness, and corrosion resistance can be enhanced. Stainless steel's finish is a natural silvery color that is very durable and easily maintained.

GENERAL Information

Door Hardware

Specifying

- When ordering, please specify the following:
1. Quantity. All prices are for single units, not pairs
 2. Product number
 3. All metals and finishes for grip, standoffs and end caps, if applicable
 4. Center-to-center dimension
 5. Door type and thickness
 6. Single or back-to-back mounting

Metal Finish Options

Refer to hardware style for metal options available for that style.

- Stainless Steel Satin
- Aluminum Clear Anodized
- Aluminum Black Anodized

Leather Grip Options

- Garrett Leather Chatham
 - Capuccino #663
 - Black #650
 - Garrett Woven Tubular Leather Square or Herringbone Pattern
 - Natural
 - Brandy
 - Saddle
 - Black
- Leather grip options are not recommended for high traffic areas or exterior use. For COL or other options, contact EKITTA.

Care and Maintenance

Stainless Steel

Stainless steel is an iron-base alloy containing chromium, which contributes to its resistance to corrosion; however, environmental conditions such as salt air will cause corrosion, but with proper care, stainless steel can maintain its finish for years. Wash stainless steel with soapy water, or a mild detergent or a standard stainless steel cleaner, thoroughly rinse with clean water and polish with a soft dry cloth.

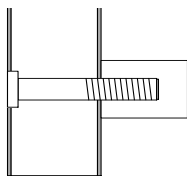
Aluminum

Aluminum is a non-ferrous alloy that is light weight and resistant to corrosion. It can be finished to a natural silvery color or receive an anodized color. Anodizing is an oxidation process that is a permanent and integral part of the aluminum. Anodized finishes do not require special maintenance. Light scratches can be cleaned using a small amount of cleanser on a clean cloth with plenty of water.

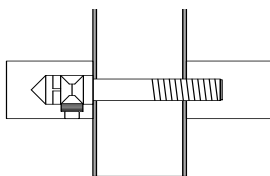
Leather

Leather is a natural material; due to its characteristics, scratches and marks may appear on the surface over time. This appearance is the “character” of natural leather. To maintain the leather, gently dust surface area regularly with a soft, dry cloth. To clean, dampen a clean cloth with lukewarm water. Cleanse the entire area where stain occurred, working from the perimeter of the stain to the center. DO NOT use saddle soap, oil, abrasive, furniture polish, varnish or ammonia.

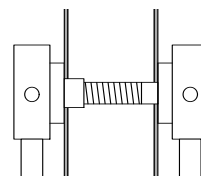
Mounting Options



Single mount on wood or metal door for Loop, Point and Post hardware collections



Back to back mount on glass, wood or metal door for Loop, Point and Post hardware collections



Back to back mount on glass, wood or metal door for Strap hardware collection

GENERAL Information

Environmental Awareness

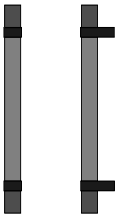
As industry leaders, it is our responsibility to advocate the protection and preservation of our environment. At Ekitta, we have an obligation to our clients, ourselves and the world community to promote recycling, reuse and responsibility in all policies and practices of our business.

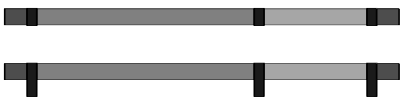
For the manufacturing of our products, we are dedicated to the purchasing of metals from suppliers who are vested in recycling, channeling waste solvents through recovery companies and recycling all scrap metals. We strive to formulate finishes that maximize employee safety as well as minimize environmental impact. We are continuously on the lookout for the most up-to-date research and technology to improve our in-house recycling and reuse methods. Even our product binder is made of 100% recycled newspaper.

Ekitta metal products are 100% recyclable, and hand made in Austin, Texas, by skilled employees who take pride in fabricating a quality product. Each product is made to order with the finest craftsmanship and attention to detail, using materials supplied by companies located in the USA.

We owe Nature, in part, for our success and acknowledge this by striving to be environmentally sensitive in all aspects of our business.

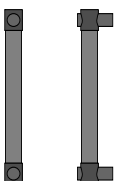
Loop

	Center-to-Center Dimension	Total Length	Wrapped Leather	Woven Leather	Stainless Steel	
			Grip Options			
 <p>Door Pull 1 1/4" diameter grip with solid aluminum standoff detail and end cap</p>	6010-12	12"	16 1/2"	470	480	490
	6011-18	18"	22 1/2"	530	550	560
	6012-24	24"	28 1/2"	580	630	630
	6013-30 *	30"	34 1/2"	660	690	690
	6014-36 *	36"	40 1/2"	730	740	740



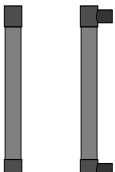
1. Please specify end cap finish, loop standoff finish and grip option. See page 5 for options.
2. For special sizes, finishes, and options, please contact EKITTA.
- *3. 30" and 36" are available with various grip options and additional standoffs. Contact EKITTA for quote.
4. Above pricing for single units, not pairs.

Point

 <p>Door Pull 1 1/4" diameter grip with solid turned stainless steel standoff and end caps</p>	6020-12	12"	13 1/2"	470	490	490
	6021-18	18"	19 1/2"	530	550	560
	6022-24	24"	25 1/2"	570	620	620
	6023-30	30"	31 1/2"	630	680	670
	6024-36	36"	37 1/2"	680	700	710

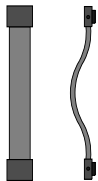
1. Standoff only available in stainless steel with a machined finish.
2. Specify grip finish. See page 5 for options.
3. For special sizes, finishes, and options, please contact EKITTA.
4. Above pricing for single units, not pairs.

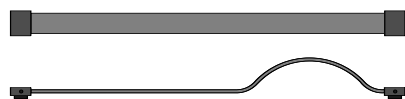
Post

	Center-to-Center Dimension	Total Length	Wrapped Leather	Woven Leather	Stainless Steel	
			Grip Options			
 <p>Door Pull 1 1/4" diameter grip with solid turned stainless steel standoff and end caps</p>	6030-12	12"	13 1/2" *	470	490	490
	6031-18	18"	19 1/2" *	530	550	560
	6032-24	24"	25 1/2" *	580	620	620
	6033-30	30"	31 1/2" *	630	680	670
	6034-36	36"	37 1/2" *	680	700	710

- Standoff only available in stainless steel with a machined finish.
- Specify grip finish. See page 5 for options.
- For special sizes, finishes, and options, please contact EKITTA.
- Listed Total Length is based on 1 5/8" specified end cap. 2 1/2" end cap available at \$20.00 net upcharge.
- Above pricing for single units, not pairs.

Strap

 <p>Door Pull 1/4" bent metal grip with solid metal end caps</p>	6040-10	10 1/2"	12"	490	510	520
	6041-12	12"	13 1/2"	520	530	540
	6042-18	18"	19 1/2"	580	590	620
	6043-30 *	30"	31 1/2"	660	690	720
	6044-36 *	36"	37 1/2"	760	780	810



- End caps and standoffs available in aluminum and stainless steel. Please specify metal and finish.
- Specify grip option. See page 5 for options.
- For special sizes, finishes, and options, please contact EKITTA.
- 30" and 36" door pulls are flat at one end and curved at the other.
- Above pricing for single units, not pairs.

Sash

	Price	Back Plane Options			Net Packing Charge
		Glass 1/4" Flat Polished	Etched Glass 1/4" Flat Polished	Etched Mirror 1/4" Flat polished	
2900-01 (Frame with Back Option)		1140	1250	1390	40



Picture Frame

Solid aluminum with
brushed finish
1/8" Clear glass front plane

22w x 31h

2901-01 (Mirror with Back Option)		1190	1250	1300	40
--	--	------	------	------	----



Framed Mirror

Solid aluminum with
brushed finish
1/4" Mirrored glass front plane

22w x 31h

Notes:

1. Shipped to be assembled.
2. For special back plane material, please contact EKITTA.
2. For special sizes, please contact EKITTA.